

Sona Systems, Ltd.

**Psychology Experiment Management System
Participant/Student Information**

Version 2.65

Copyright © 2006 Sona Systems, Ltd., All Rights Reserved

About This Manual

This manual covers usage of the system from the perspectives of a Participant (Student).

Sona Systems, Ltd.....	1
EXPERIMENT MANAGEMENT SYSTEM.....	1
Participant Information	1
Version 2.65.....	1
Copyright © 2006 Sona Systems, Ltd., All Rights Reserved.....	1
About This Manual.....	2
PARTICIPANT (STUDENT) DOCUMENTATION.....	4
Introduction.....	4
Getting Started	4
Requesting an Account.....	4
Logging In.....	5
Retrieving a Lost Password	6
Logging Out	6
Changing Your Password and Other Information.....	7
Email Address Options.....	7
Unique ID Codes.....	8
Studies.....	8
Viewing Studies	8
Two-Part Studies	9
Online Survey Studies	9
Signing Up For Studies	9
Canceling a Sign-Up	11
Tracking Your Progress	12
Reassigning Credits.....	13
Online Pretests	13
Frequently Asked Questions	14

PARTICIPANT (STUDENT) DOCUMENTATION

Introduction

The Experiment Management System provides an easy method for you to sign up for studies, and track your progress through the term. Everything is done through the software's web-based interface, so you can access the system at any time, from any computer, with a standard web browser.

It should be noted that this documentation covers all the features in the system, but your organization may have chosen to disable certain features. Do not be alarmed if the documentation covers options and features that are not visible on the system you are using.

Getting Started

Your interaction with the system will be minimal and hopefully as painless as possible. After you log in to the system, you can view a list of available studies and any restrictions, sign up for studies that interest you, and track your progress throughout the semester. The system will track when you receive credits for a study, so you can view this online as well.

The system works best if you use a web browser that is less than 2 years old. It works well with Internet Explorer version 4 and above, Netscape version 4 and above, and Firefox version 1 and above. It will work with other web browsers, and with older versions of Internet Explorer and Netscape, however the layout may not be as clean. No functionality will be lost by using an older web browser. This documentation assumes you have a basic knowledge of how to use the web. On this system, it is not necessary to use the Back button. You can always use the toolbar on the top of every screen to navigate anywhere on the site.

Requesting an Account

In your web browser go to <http://psycstu.sona-systems.com/>. If you see a link on the front page of the site to request an account, then your organization has enabled the feature to allow you to request an account. Click the link, and you will be required to provide some very basic information. Depending on how your system is configured, you may receive an email notification immediately with your login information, or you may receive the notification only after the administrator has approved the account. The email notification will include login instructions for the system. You will be assigned a default password, which you can change after your first login. In many cases, you may also provide an alternate email address (after your first login) if you prefer to receive future notifications at another email address. The email will come from the administrator's email address (listed on the request account page), so be sure to configure your junk mail filters to allow email from that address.

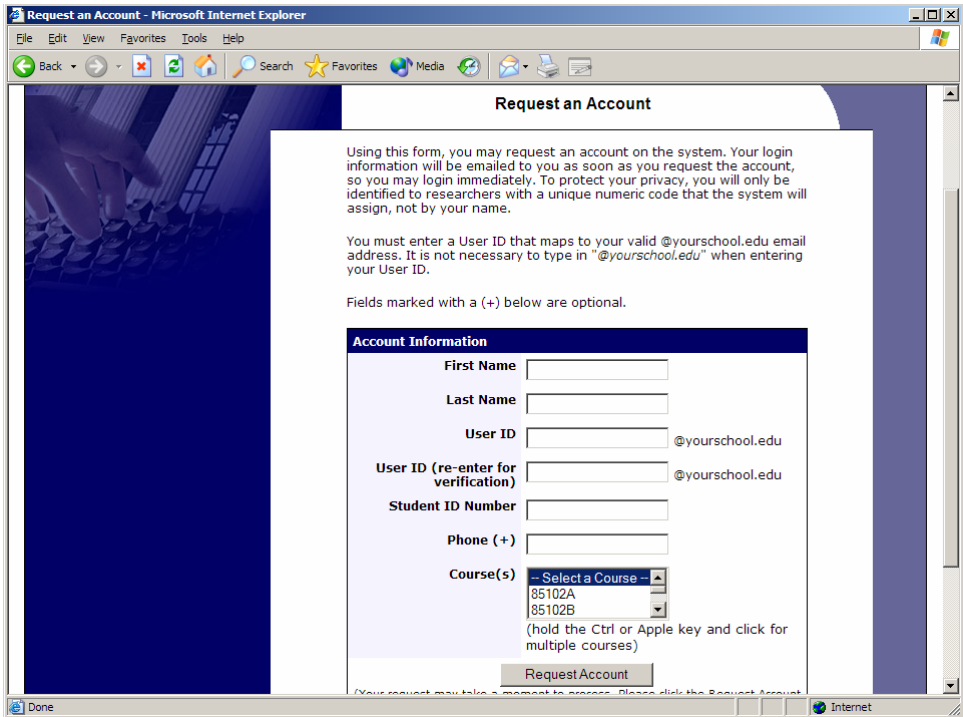


Figure 1 - Requesting an Account

If your organization has not enabled this feature, then your organization will create an account on your behalf. You will receive this account information, most likely by email.

Logging In

Once you have your login information, go to the front page of the site and enter your user ID and password to login.

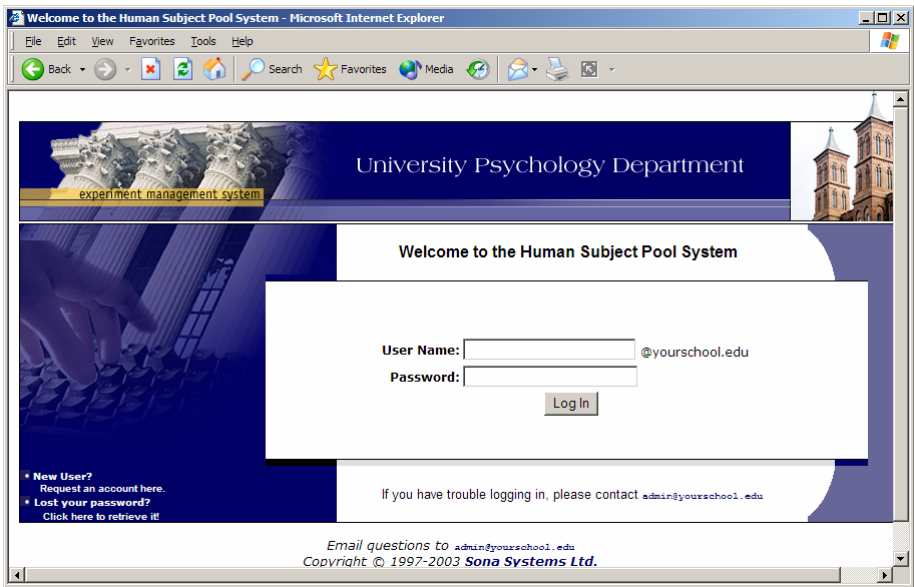


Figure 2 - Login Page

Once you login, you may be asked to review and acknowledge your organization's human subject policy for research. You will need to acknowledge this only once every 6 months. You may also be asked to participate in a pretest. After you complete these tasks, you will see the Main Menu.

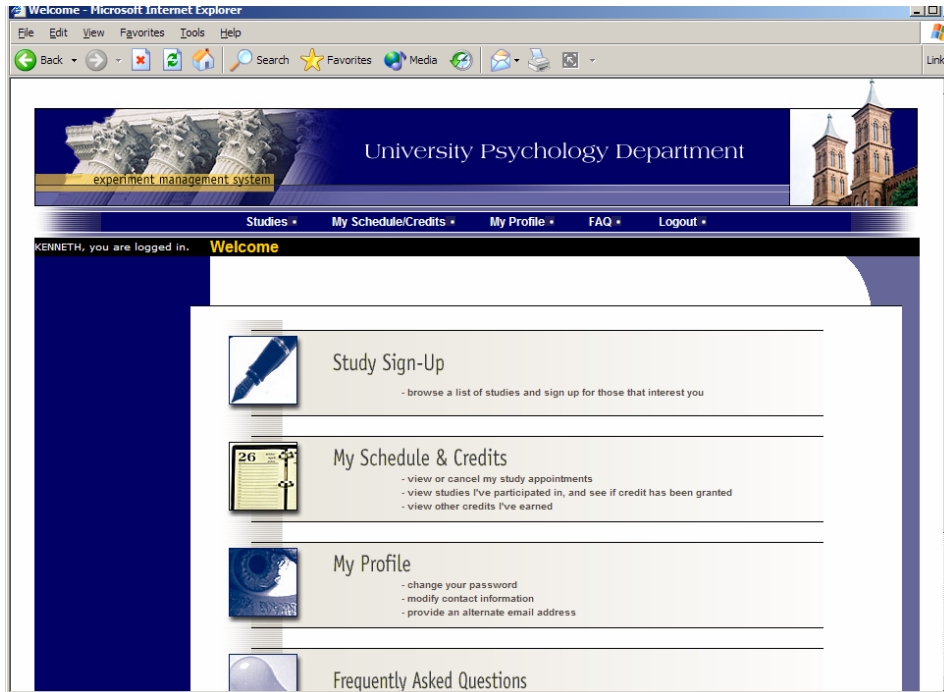


Figure 3 - Main Menu

Your login (also known as a session) will expire after a certain period of inactivity, usually 20-60 minutes. This is done for security purposes. If this happens, you can always log in again. When you are done using the system, it is better to explicitly log out, to prevent any problems that may arise if someone uses your computer before the session expires. This is especially important if you are using a public computer lab.

Retrieving a Lost Password

If you have forgotten or do not have your password, and the feature is enabled on the system, then you may choose to have your password emailed to you. You will see an option on the front login page if this feature is enabled. Your password will be emailed after you submit the form, and should arrive in your email box momentarily. If you provided an alternate email address (see the Email Address Options section of this documentation), it will be sent there. Otherwise, it will be sent to your main email address, which is derived from your user ID.

Logging Out

When you are done using the system, choose Log Out from the toolbar on the left side to log out. You are now logged out. It is always a good security measure to close all your browser windows as well, especially if you are using a computer that is shared by others.

Changing Your Password and Other Information

If you would like to change your password or other information about yourself, choose My Profile from the top toolbar. If you would like to change your password, type your new password (twice, for confirmation) in the provided boxes. If you would *not* like to change your password, simply leave these boxes empty.

Fields marked with a (+) are optional.

My Profile

Name ALI ATALIK

Identity Code 28825
(Experimenters will see only this code, and never your name)

User ID aatalik@yourschool.edu

New Password
Enter twice, or leave blank if you do not want to change your password.

Student ID # 999000907

Phone Number (+)

Alternate Email Address (+)
If provided, all emails sent to you from the system will be sent to this address.

Credits Earned 0

Credits Required 3

Course(s) • 85102N

Pretest Status Completed

Figure 4 - Updating Your Profile

Email Address Options

There are certain events in the system which will cause an email notification to be sent to you. Most often, these are notifications that you have received credit for a study, or a confirmation that you have signed up for a study. If Unique ID codes are *not* enabled (see Unique ID codes), your email address is also displayed to the researcher when they view who has signed up for their study, in the event they need to contact you.

You have two choices for your email address. When you update your profile, you will see a box where you may provide an alternate email address. If you provide such an address (this could be a Hotmail account, for instance), this is the address where any notifications will be sent, and this is also the address that will be displayed to researchers (if enabled).

If you do not supply an alternate email address, the system will derive your email address from your username. Typically, it will add your organization's Internet domain to the end of your user ID to form the address, so if your user ID is "jsmith" and your organization's Internet domain is "stu.ca" then it would derive your email address as "jsmith@stu.ca".

In some cases, depending on how the system is configured, you will be required to provide an email address (which will be listed as "Email Address" instead of "Alternate Email Address") and all emails to you will go to that address.

On some systems, the Alternate Email Address option is not available.

Unique ID Codes

If enabled, the system will automatically assign a unique, numeric ID code to you. You should continue to use your normal login ID to log in to the system. The purpose of the ID code is to identify you to researchers in a way that does not reveal your identity or compromise your privacy. If this feature is enabled, you will see this ID code when you view the Human Subjects Policy, when you update your profile, and in email confirmations and reminders about your upcoming study sessions. You should bring this ID code with you when you go to studies or when communicating with researchers, as they know you only by your ID code, and not your name.

Studies

With the system, you may view studies and sign up for those that interest you and where you meet any special requirements. You may cancel your sign-up through the system as well.

You may see some studies that are online studies. You should read the details of these studies closely, but generally you may participate in them online. It is usually assumed you will participate in the study shortly after you sign up for it, though you have until the Participation Deadline Date to participate.

Viewing Studies

To view a list of studies, click on Studies from top toolbar. You will see a list of studies. A brief description of each study will be listed, as well as any special requirements that may restrict your eligibility to participate in the study.

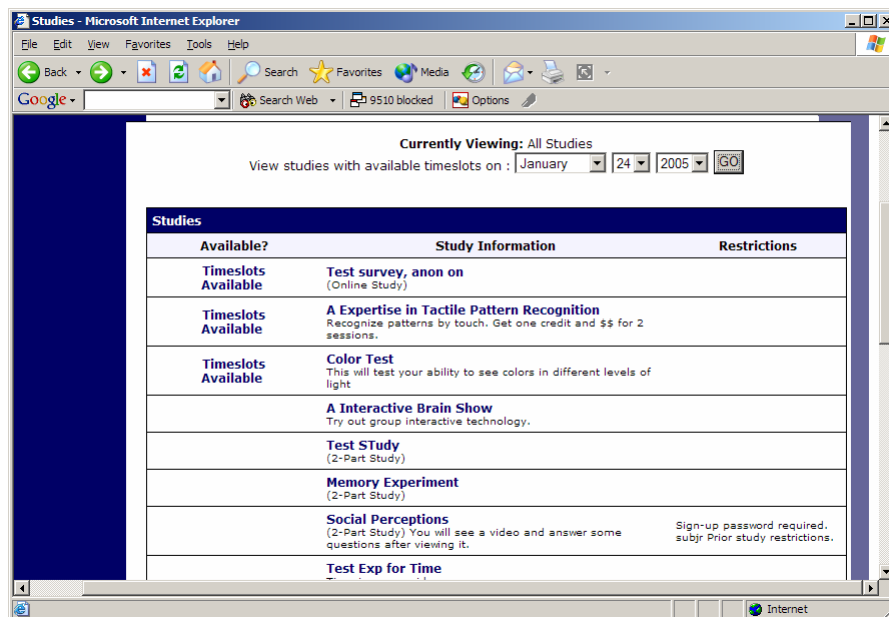


Figure 5 - Viewing Studies

Studies that currently have available participation times (timeslots) will have “TIMESLOTS AVAILABLE” listed next to the name of the study. If no studies have available timeslots, you may want to logon to the system a few days later to see if new timeslots have been added. You may also select a specific date to view studies with available timeslots on that date.

To view more information about a study, click on the name of the study.

Two-Part Studies

Some studies are two-part studies, where you must sign up for both parts of the study at once, and the two parts must be scheduled a certain number of days apart. These studies will be clearly marked.

Online Survey Studies

Some studies may be online survey studies. If you sign up for one of these studies, you will be taken immediately to the survey. As soon as you complete the survey, you will receive credit.

You may withdraw from the survey at any time. If you withdraw, you will not be granted credit immediately, but the researcher will be sent a notification and they may grant you credit later.

Signing Up For Studies

To sign up to participate in a study, find the study you would like to participate in (see Viewing Studies in this documentation). Click on the study name for more information. You will see a list of any special restrictions or eligibility requirements, as well as a contact person if you have questions about the study.

Some restrictions are automatically enforced by the system. If the study has certain prerequisites or disqualifiers (studies you must *not* have participated in to participate in this study), those will be listed, as well as a note about whether you meet those eligibility requirements.

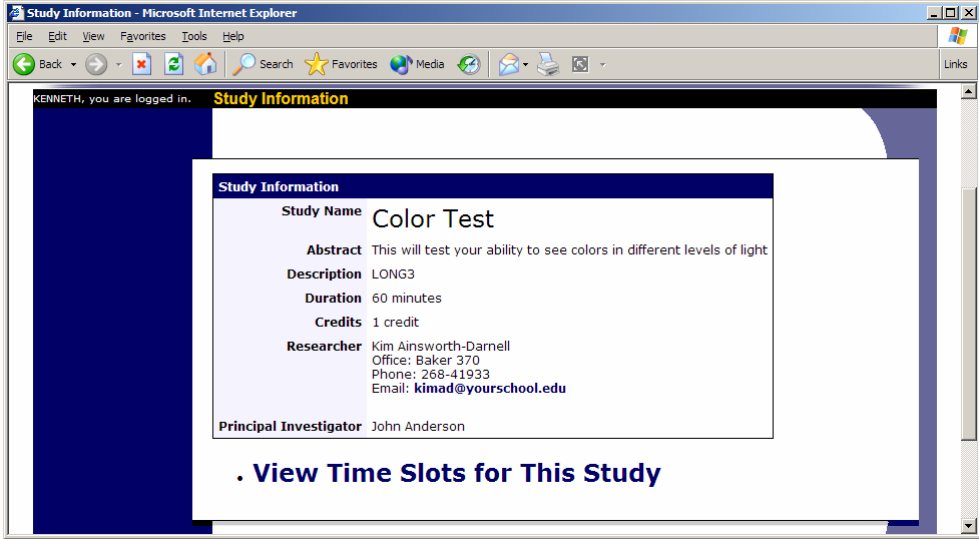


Figure 6 - Study Information

The study may have other restrictions listed as Subject Restrictions. An example of a Subject Restriction is “Left-handed people only.” If listed, then the system does *not* enforce this restriction, but you should only sign up for the study if you meet this restriction. If you sign up for the study and you do not meet the restrictions, you will likely not receive credit for the study, and could face a penalty.

Some studies require a special password to sign up. If this is the case, it will be noted. The researcher should have given you this special password. It is *not* the same as the password you use to login to the system. You will need to enter the special sign-up password just before you click the Sign Up button to sign up for a timeslot.

You may only sign up for a timeslot up until a certain time before that timeslot is scheduled to occur. The system will not show a Sign Up button for timeslots where it is too late to sign up.

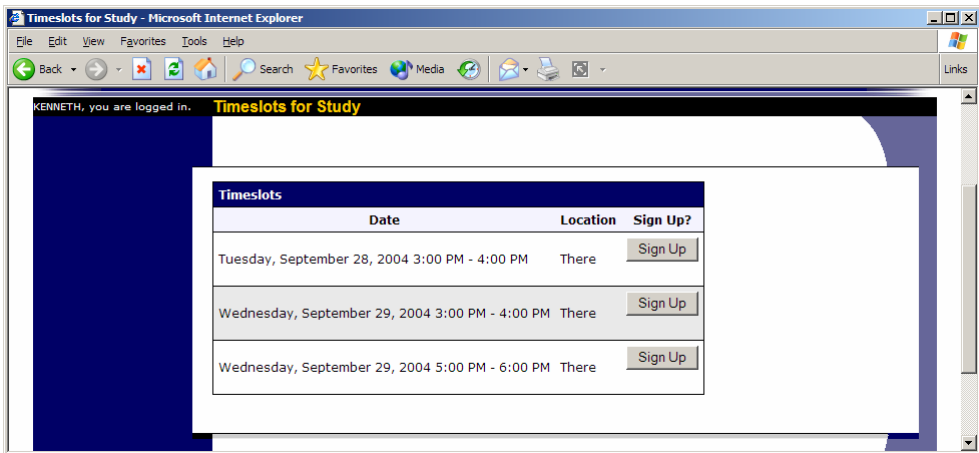


Figure 7 - Study Timeslots

Once you have determined you meet all the requirements, click on View Timeslots for This Study and you will see a list of available timeslots. Choose a timeslot that is convenient for you, and click Sign Up.

After you click Sign Up, you will see information displayed confirming the time and location of the study you plan to participate in. You may receive an email confirmation as well, depending on how your system is configured. You are now signed up for the study. To cancel your sign-up, see Canceling a Sign-Up in this documentation.

Canceling a Sign-Up

If you need to cancel a timeslot you have signed up for, you can do this from the My Schedule and Credits page. Choose the My Schedule/Credits option from top toolbar.

You will see listed all the studies you have signed up for, as well as those you have completed (see the Tracking Your Progress section of this documentation for more information).

Studies you have signed up for that you are allowed to cancel will have a Cancel button next to them. There is a time limit before the study is to occur, when it is too late to cancel. This restriction is listed at the bottom of the page.

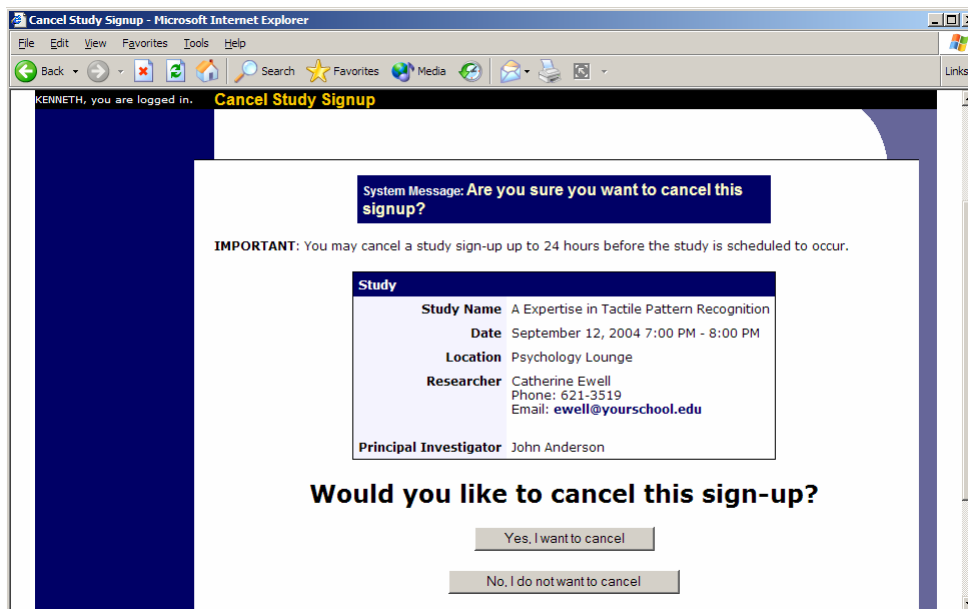


Figure 8 - Sign-Up Cancellation

Once you click Cancel to cancel your sign-up, you will see a confirmation page. You will also be warned if your cancellation might affect your ability to participate in other studies you have signed up for, due to pre-requisite restrictions. If the cancellation will affect your ability to participate in another study you are signed up for, it is *your* responsibility to deal with this issue (usually by canceling the depending study as well). The system will warn you, but will not block the cancellation.

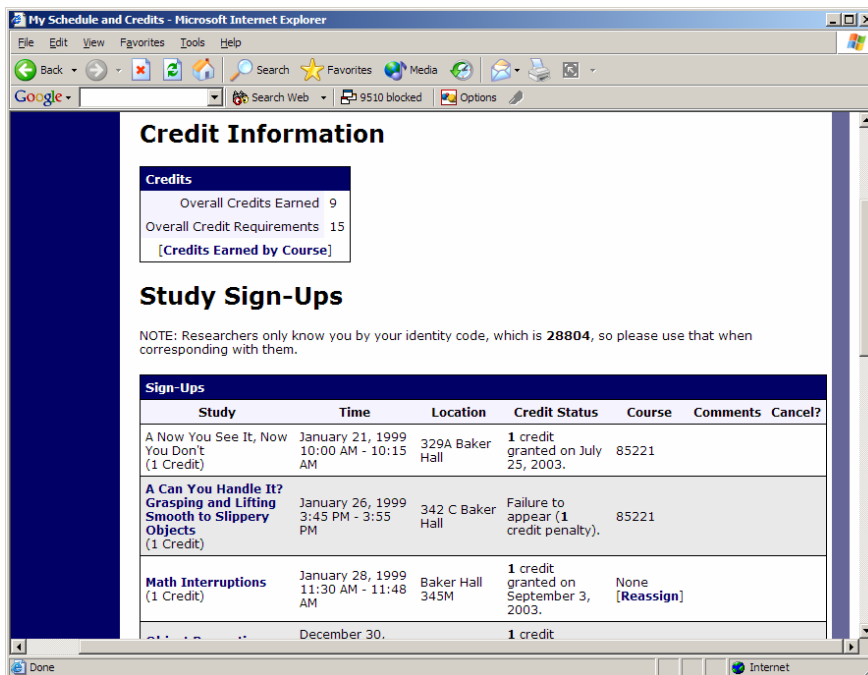
Click Yes to cancel your sign-up, and the sign-up will be cancelled immediately.

If you cancel the first part of a two-part study, the second part will also be cancelled. If you cancel the second part of a two-part study, the first part will *not* be cancelled, but you will need to ask the researcher to sign you up for the second part again, if you would like to participate in it at a later date.

Tracking Your Progress

You may track your progress at any time by choosing the My Schedule/Credits option from the top toolbar.

When you view this page, you will see at the top a list of the number of credits you are required to earn, and how many you have earned so far. You may also have an option to view how many credits you have earned for each course. Below that, if you have signed up for any studies, those are listed as well. In the list of studies, you will see information about your credit status.



Credit Information

Credits

Overall Credits Earned 9
Overall Credit Requirements 15
[Credits Earned by Course]

Study Sign-Ups

NOTE: Researchers only know you by your identity code, which is 28804, so please use that when corresponding with them.

Study	Time	Location	Credit Status	Course	Comments	Cancel?
A Now You See It, Now You Don't (1 Credit)	January 21, 1999 10:00 AM - 10:15 AM	329A Baker Hall	1 credit granted on July 25, 2003.	85221		
A Can You Handle It? Grasping and Lifting Smooth to Slippery Objects (1 Credit)	January 26, 1999 3:45 PM - 3:55 PM	342 C Baker Hall	Failure to appear (1 credit penalty).	85221		
Math Interruptions (1 Credit)	January 28, 1999 11:30 AM - 11:48 AM	Baker Hall 345M	1 credit granted on September 3, 2003.	None	[Reassign]	
	December 30.		1 credit			

Figure 9 - Viewing Your Progress

If you failed to appear for a study, it is possible you were assessed a penalty. That will be displayed in your progress, and the penalty (if assessed) will either increase the number of credits you must earn, or be deducted from your current credit earnings, depending on how the system is configured. It is possible you might end up with a negative value for the number of credits you have earned. Next to each credit or penalty, you can also see any comments the researcher left regarding the study and your credit for it.

Non-study credit is also listed, when applicable. Non-study credit is usually granted for writing a paper or some other special situation.

It is possible that older records of your participation are in the system, but not displayed. If that is the case, you'll see an option to view the older records as well.

Reassigning Credits

If you belong to multiple courses, and the system is configured to allow it, you may reassign a credit from one course to another. To do this, simple use the Reassign link that appears when you view your progress. The link appears under the course entry for each item in your progress listing.

Online Pretests

If enabled on your system, you may be asked to take an online pretest before you use the system. Depending on how the pretest was configured, you may have the option to opt out of the entire pretest and/or individual questions. You should realize that declining to participate in the pretest or certain questions may affect your eligibility for some studies, so participation is strongly encouraged.

In some cases, you may earn credit for participating in the pretest, and you may even earn credit if you decline to participate in the pretest. If either case holds true, the system will inform you of this before you commence the pretest.

The pretest may consist of multiple sections. All questions are either multiple-choice or fill-in (free-entry) answer, so it should be rather easy to complete. At the end of the pretest, you will have a chance to review and change any of your responses. After you save all your responses, you may not take the pretest again, so answer the pretest carefully.

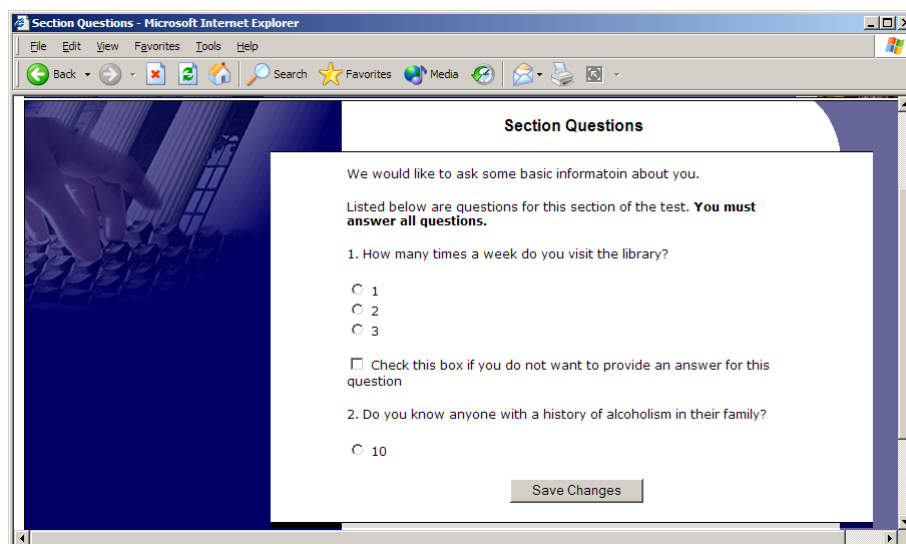


Figure 10 - Pretest Questions

Frequently Asked Questions

Immediately after I login, as soon as I click on any menu option, I am taken back to the login page and I see a message that my authentication has expired. What does this mean?

Your web browser is not properly configured to accept cookies. You should turn on cookies in your web browser, use a different web browser (for example, try Firefox if you are currently using Internet Explorer), or try a different computer. Detailed instructions can be found if you go to the site and enter the url “cookie_help.asp” in place of “default.asp” in the address bar of the browser, when you are on the front page of the site.

I participated in a study, but I have yet to receive credit. How do I receive credit?

The researcher must grant you credit. This is usually done shortly after your participation. If it has been some time and you have still not received credit, contact the researcher.

Who can see the information about my sign-ups? I don't want everyone to know which studies I signed up for.

Only the researcher and principal investigator of the study may see that you have signed up for it, along with the subject pool administrator. No other users, including other researchers, may see this information.

How do I change the email address where email notifications from the system are sent?

Provide an Alternate Email address and notifications will be sent there. See the Email Address Options section of this documentation for more information. In some cases, this option may not be available.

I wrote a paper instead of participating in studies. How do I know I have completed my requirements?

View the My Schedule and Credits page and any non-study credit will also be listed there. See the Tracking Your Progress section of this documentation for more information.

I noticed that with some studies, I can sign up for them again even if I participated before, while others don't allow for this. Why is this?

Researchers can choose if their studies allow you to participate more than once. Not all studies allow you to participate more than once.

I attempted to sign up for a study, and I was prevented from doing so because the study I was trying to sign up for is a disqualifier for another study I am scheduled to participate in. Why is this?

If you have signed up for a study that has disqualifiers (studies you must *not* have participated in to participate in that study), you may not then sign up for the studies that are listed as the disqualifier studies. You *are* allowed to sign up for the disqualifier studies if the disqualifier study will take place after the study with disqualifiers, or if you have already participated in (and received credit for) the study with disqualifiers. The easiest way to sign up for both studies is to schedule the disqualifier study at a time later than the study with disqualifiers.